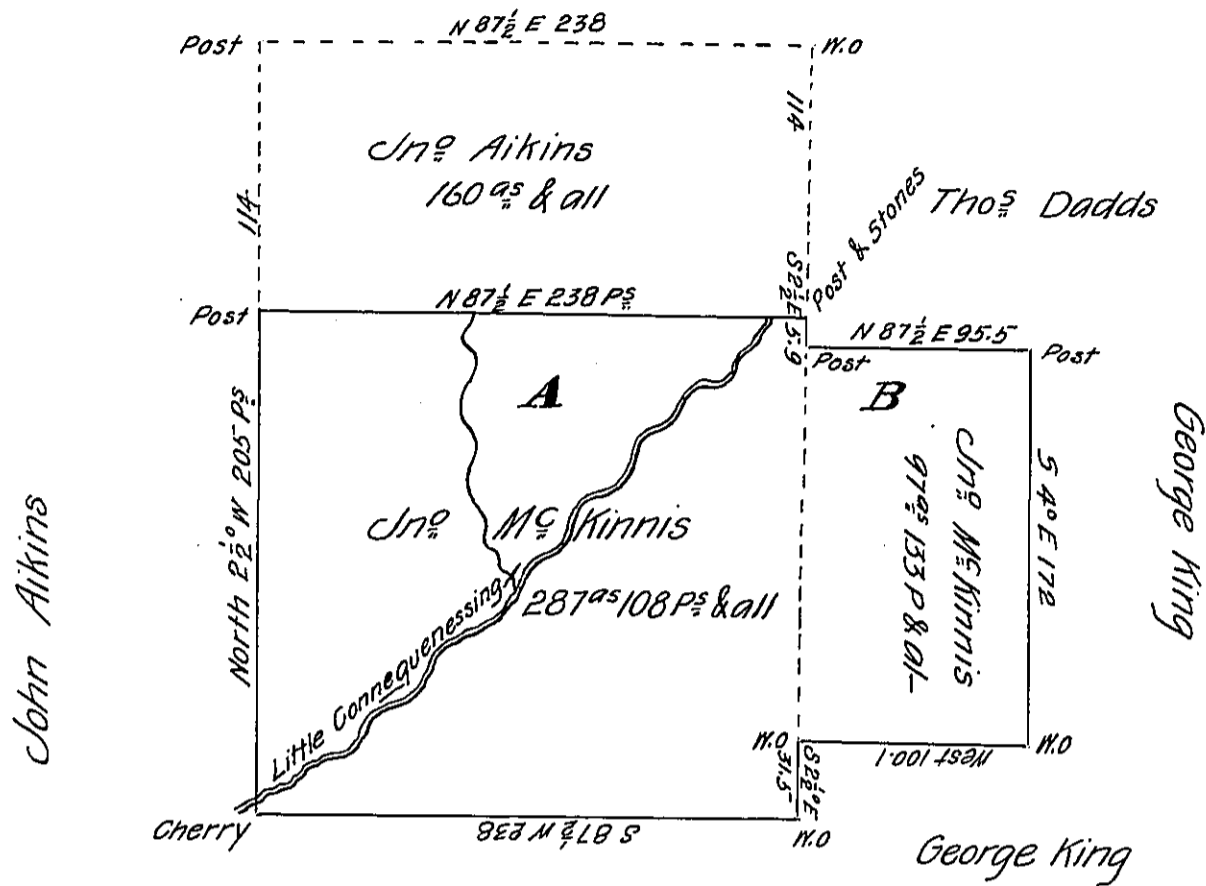


Christianna Lacrose



Heirs of John Graham Decd

Draft of a Survey of land partly situate in Connequenssing and partly in Butler township Butler County. The part marked A. contains two hundred eighty seven acres one hundred and eight perches with the usual allowance &c &c. Being part of a larger tract, and the part marked B, contains ninety seven acres one hundred and thirty three perches with the usual allowance &c &c. Containing in all three hundred eighty five acres eighty one perches & all. Surveyed the 29th day of Jan^y 1835. By Virtue of the actual residence Settlement and Improvement of John McKinnis

James J. Hoge D. S.

To Jacob Spangler Esq^r
Surveyor General.

IN TESTIMONY that the above is a copy of the original remaining on file in the Department of Internal Affairs of Pennsylvania, made conformably to an Act of Assembly approved the 16th day of February, 1833, I have hereunto set my Hand and caused the Seal of said Department to be affixed at Harrisburg, this sixteenth day of January 1906.

Joac D. [Signature]
Secretary of Internal Affairs.